

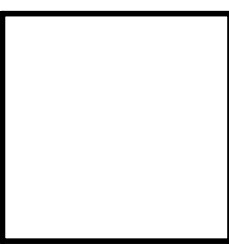
T:\pdg\07195NSG\1AC-Submittal\719-HOTEL-NEW-elev.dwg * EAST ELEV. * Xref Included: XBDP [T:\pdg\2006 PROJECTS\0651MF\0651-CD\Arch\Rev_0\XBDP.dwg] BOB_STAMP [T:\pdg\BOB_STAMP.dwg]

NOTES:
 1. ALL WINDOWS AT GUEST ROOMS TO BE RESTORED.
 2. CLAY TILE ROOF TO BE REPLACED
 3. ALL OPENINGS & FENESTRATIONS TO BE RESTORED TO ORIGINAL LOOK.



PROPOSED EAST ELEVATION SCALE: 1/8" = 1'-0"

No.	Date	Revision



MCM DESIGN GROUP
 18071 Irvine Blvd.
 Tustin, California
 92680
 Tel: (714) 835-5800
 Fax: (714) 835-5899
 www.mcmdesign.com

Project: **PARK PLACE COMMERCIAL, LP
 NEW CONSTANCE HOTEL RENOVATION**
 940 E. COLORADO BLVD.
 PASADENA, CA. 91108

Sheet Title: **PROPOSED HOTEL EAST ELEVATION**

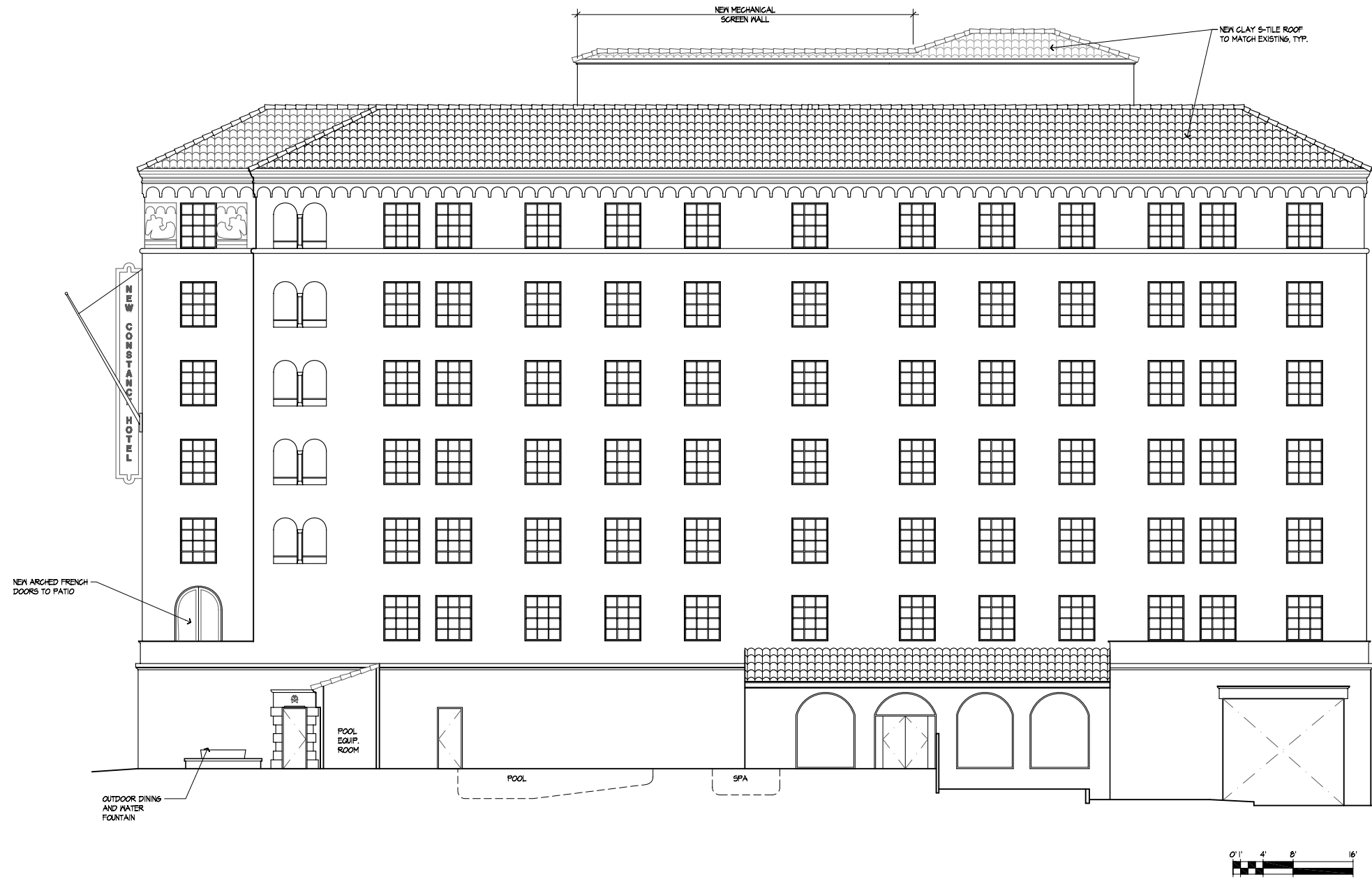
Job No.: 07195NSG
 Drawn By: PDG
 Project Architect: PDG
 Checked By: PDG
 File Name: 719-HOTEL-NEW-elev.dwg
 Plot Date: Oct 15, 2007

Sheet No.: **A6.0**

PACIFIC DESIGN GROUP EXPRESSLY RESERVES ALL COMMON LAW COPYRIGHT AND PROPERTY RIGHTS IN THESE PLANS. THESE PLANS ARE NOT TO BE REPRODUCED, CHANGED OR COPIED IN ANY FORM OR MANNER WHATSOEVER WITHOUT FIRST OBTAINING THE EXPRESS WRITTEN PERMISSION AND CONSENT FROM PACIFIC DESIGN GROUP.

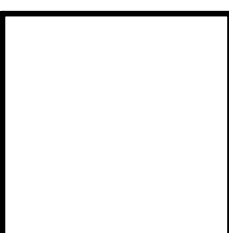
T:\pdg\07195NSG\1AC-Submittal\ • 719-HOTEL-NEW-elev.dwg • WEST ELEV • Xref Included: XBRD [T:\pdg\2006 PROJECTS\0651MF\0651-CD\arch\rev_0\XBRD.dwg] BOB_STAMP [T:\pdg\BOB_STAMP.dwg],

NOTES:
 1. ALL WINDOWS AT GUEST ROOMS TO BE RESTORED.
 2. CLAY TILE ROOF TO BE REPLACED
 3. ALL OPENINGS & FENESTRATIONS TO BE RESTORED TO ORIGINAL LOOK.



PROPOSED WEST ELEVATION SCALE: 1/8" = 1'-0"

No.	Date	Revision



MDC DESIGN GROUP
 18711 Irvine Blvd.
 Tustin, California
 92680
 Tel: (714) 835-5000
 Fax: (714) 835-1000
 www.mdcgroup.com

Project: **PARK PLACE COMMERCIAL, LP
 NEW CONSTANCE HOTEL RENOVATION**
 940 E. COLORADO BLVD.
 PASADENA, CA. 91108

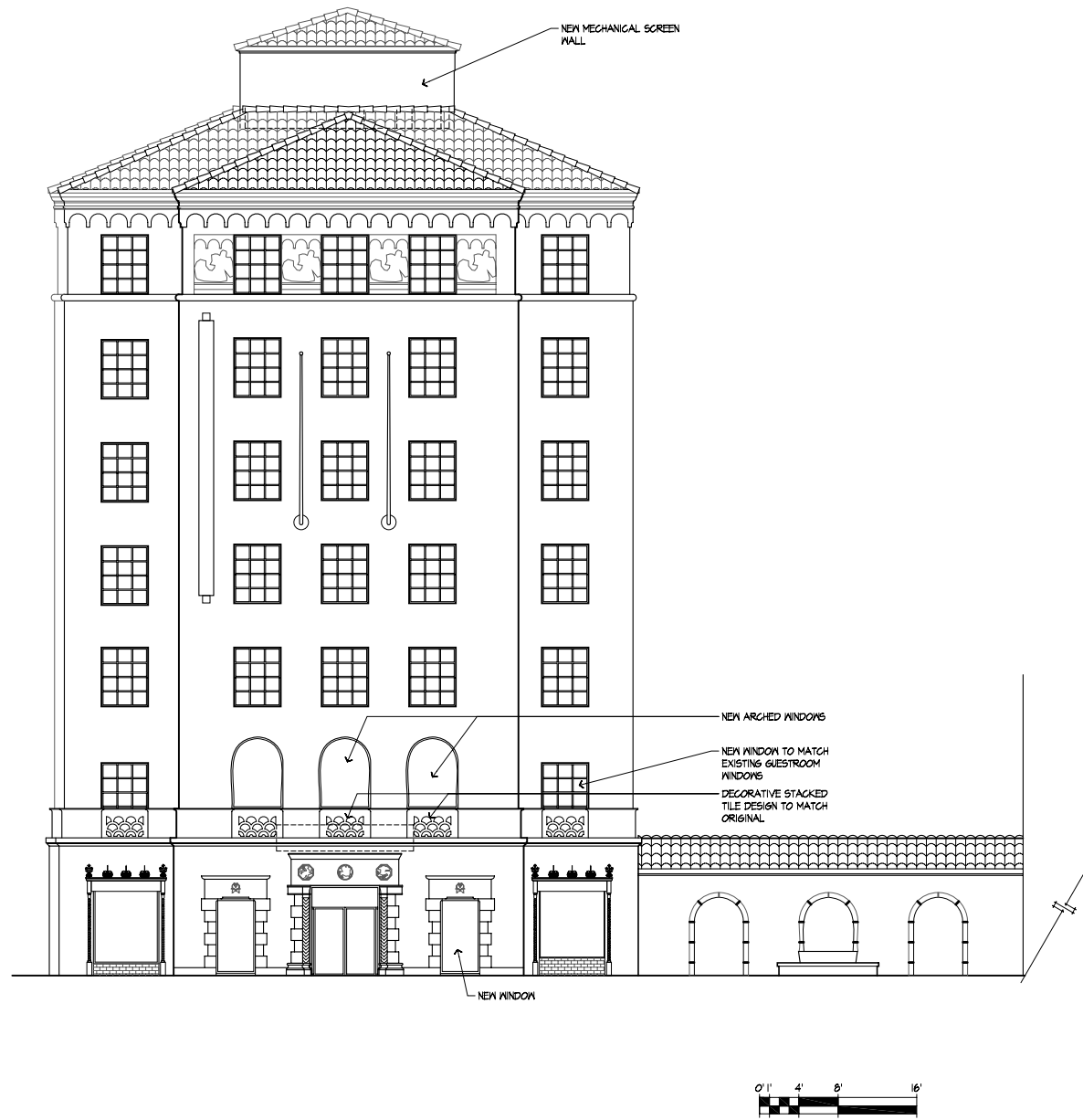
Sheet Title: **PROPOSED HOTEL WEST ELEVATION**

Job No.: 07195NSG
 Drawn By: PDG
 Project Architect: PDG
 Checked By: PDG
 File Name: 719-HOTEL-NEW-elev.dwg
 Plot Date: Oct 15, 2007

Sheet No.: **A6.1**

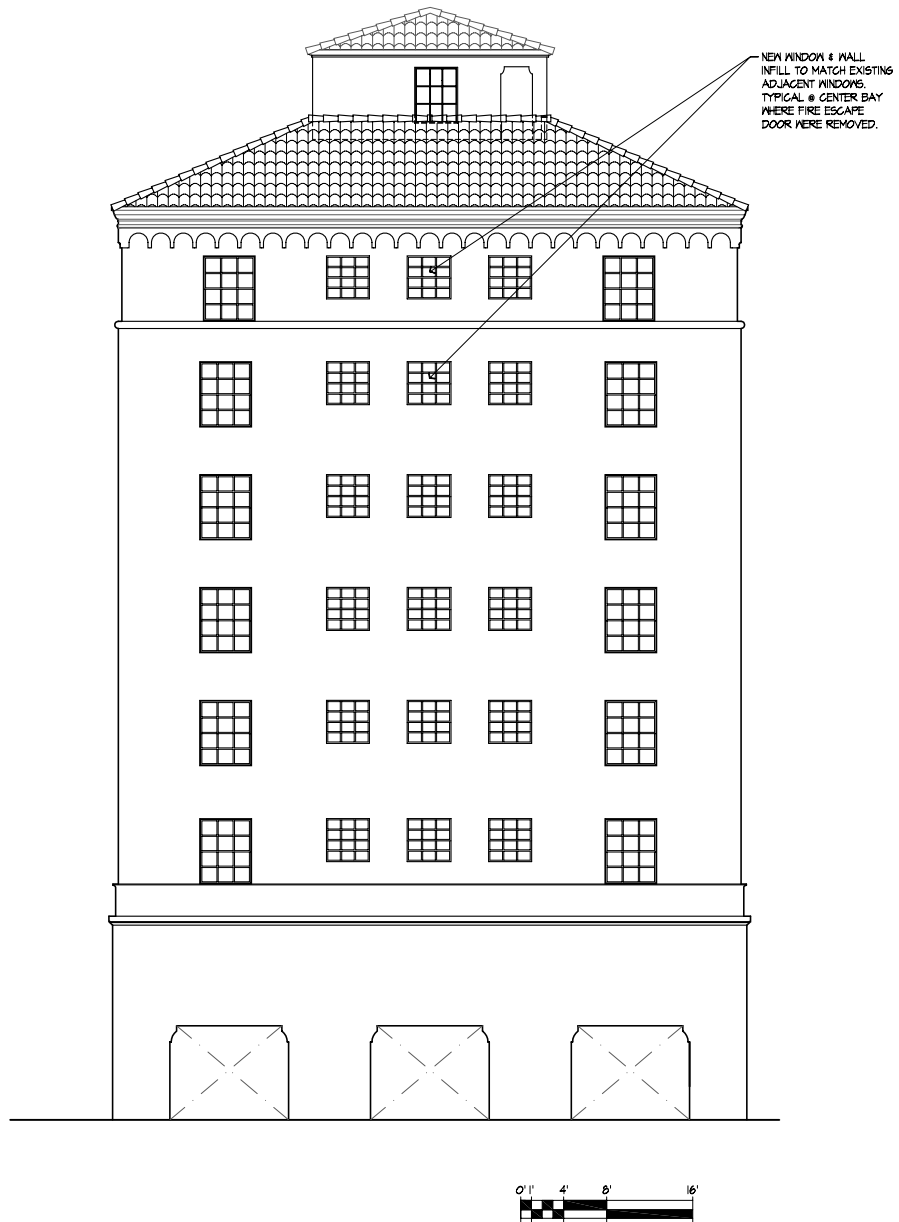
PACIFIC DESIGN GROUP EXPRESSLY DISCLAIMS ALL COMMON LAW COPYRIGHT AND PROPERTY RIGHTS IN THESE PLANS. THESE PLANS ARE NOT TO BE REPRODUCED, CHANGED OR COPIED IN ANY FORM OR MANNER WITHOUT FIRST OBTAINING THE EXPRESS WRITTEN PERMISSION AND CONSENT FROM PACIFIC DESIGN GROUP.

T:\p04\07195NSG\pac-Submit\719-HOTEL-NEW-elev.dwg * 719-HOTEL-NEW-elev.dwg * NORTH-SOUTH ELEV. * Xref Included: XDDR [T:\p04\2006 PROJECTS\065\MP\0651-CD\arch\rev 0\XDDR.dwg] BOB_STAMP [T:\p04\BOB_STAMP.dwg],



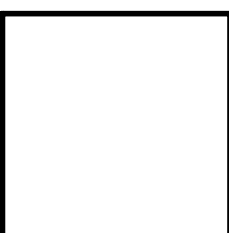
PROPOSED NORTH ELEVATION SCALE: 1/8" = 1'-0"

NOTES:
 1. ALL WINDOWS AT GUEST ROOMS TO BE RESTORED.
 2. CLAY TILE ROOF TO BE REPLACED
 3. ALL OPENINGS & FENESTRATIONS TO BE RESTORED TO ORIGINAL LOOK.



PROPOSED SOUTH ELEVATION SCALE: 1/8" = 1'-0"

No.	Date	Revision



MDC DESIGN GROUP
 ARCHITECTS & INTERIORS
 18711 Irvine Blvd.
 Tustin, California
 92680
 Tel: (714) 835-5000
 Fax: (714) 835-5000
 www.mdcgroup.com

Project: **PARK PLACE COMMERCIAL, LP
 NEW CONSTANCE HOTEL RENOVATION**
 940 E. COLORADO BLVD.
 PASADENA, CA. 91108

Sheet Title: **PROPOSED HOTEL NORTH & SOUTH ELEVATIONS**

Job No.: 07195NSG
 Drawn By: PDG
 Project Architect: PDG
 Checked By: PDG
 File Name: 719-HOTEL-NEW-elev.dwg
 Plot Date: Oct 15, 2007

Sheet No.: **A6.2**

PACIFIC DESIGN GROUP EXPRESSLY RESERVES ALL COMMON LAW COPYRIGHT AND PROPERTY RIGHTS IN THESE PLANS. THESE PLANS ARE NOT TO BE REPRODUCED, CHANGED OR COPIED IN ANY FORM OR MANNER WITHOUT FIRST OBTAINING THE EXPRESS WRITTEN PERMISSION AND CONSENT FROM PACIFIC DESIGN GROUP.